

Humidity Generation and Calibration Equipment
THUNDER SCIENTIFIC®
CORPORATION THE HUMIDITY SOURCE

Model 2500

Gauge Locations and Settings

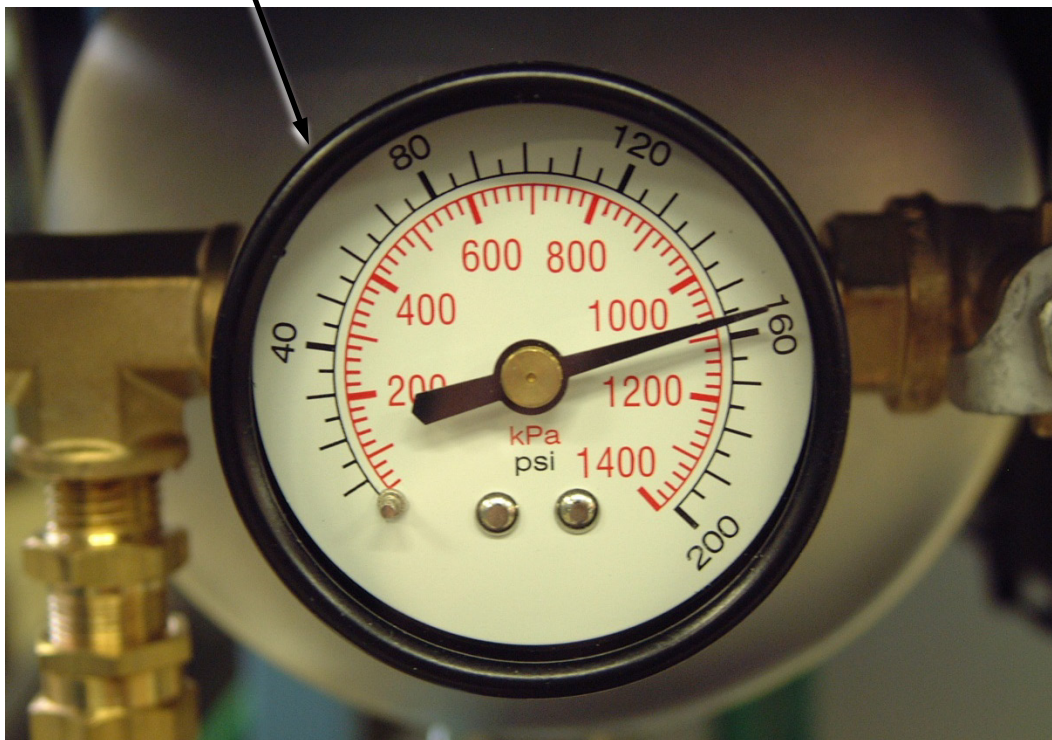
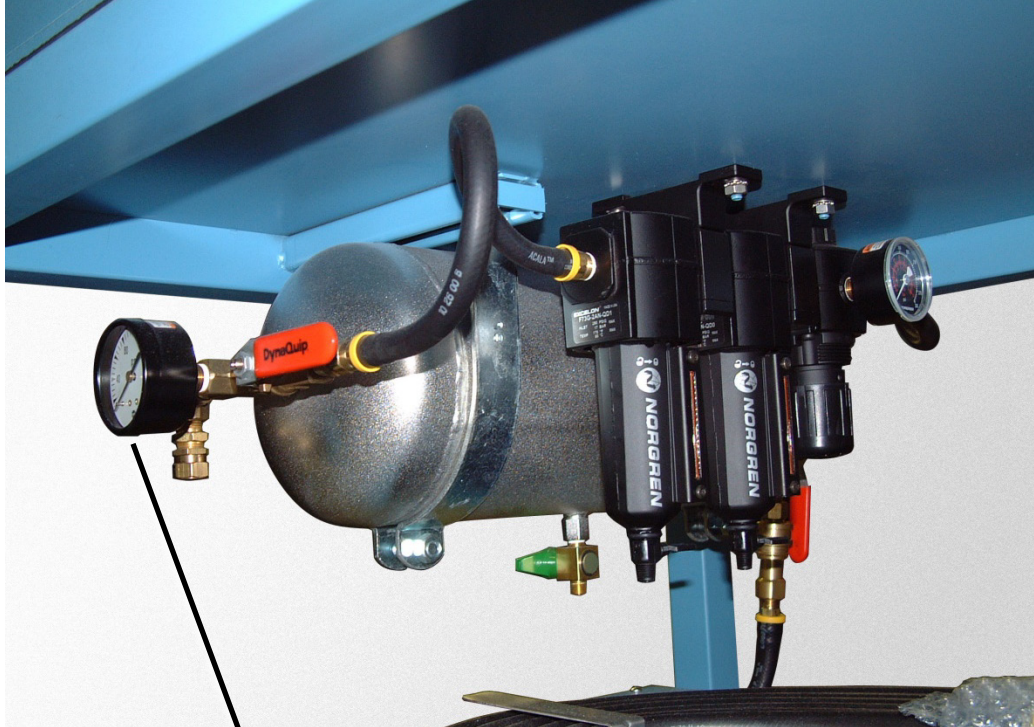


Tech Support Document TSD-0200
Revision Date: October 21, 2005

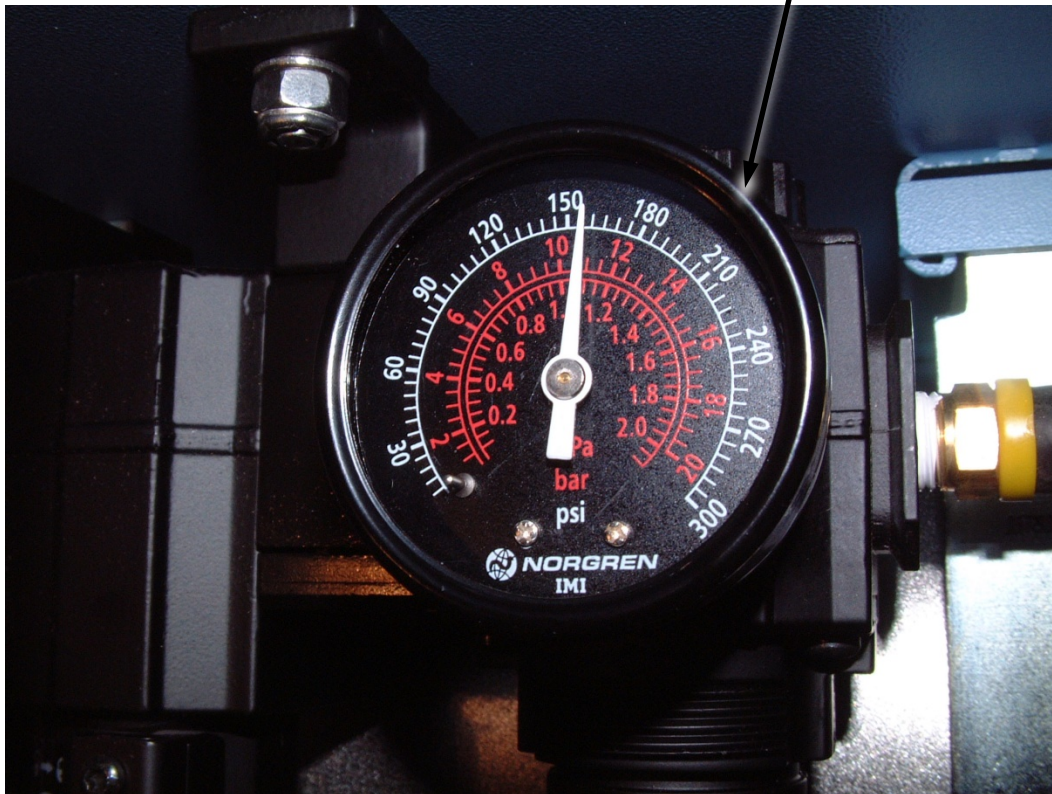
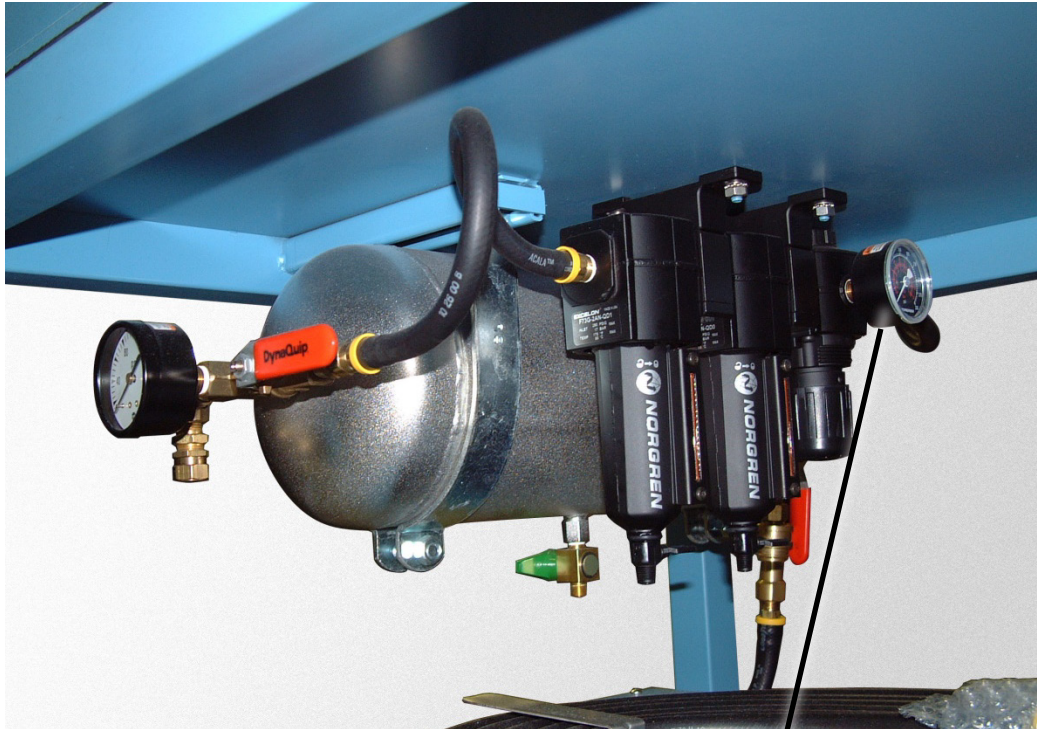


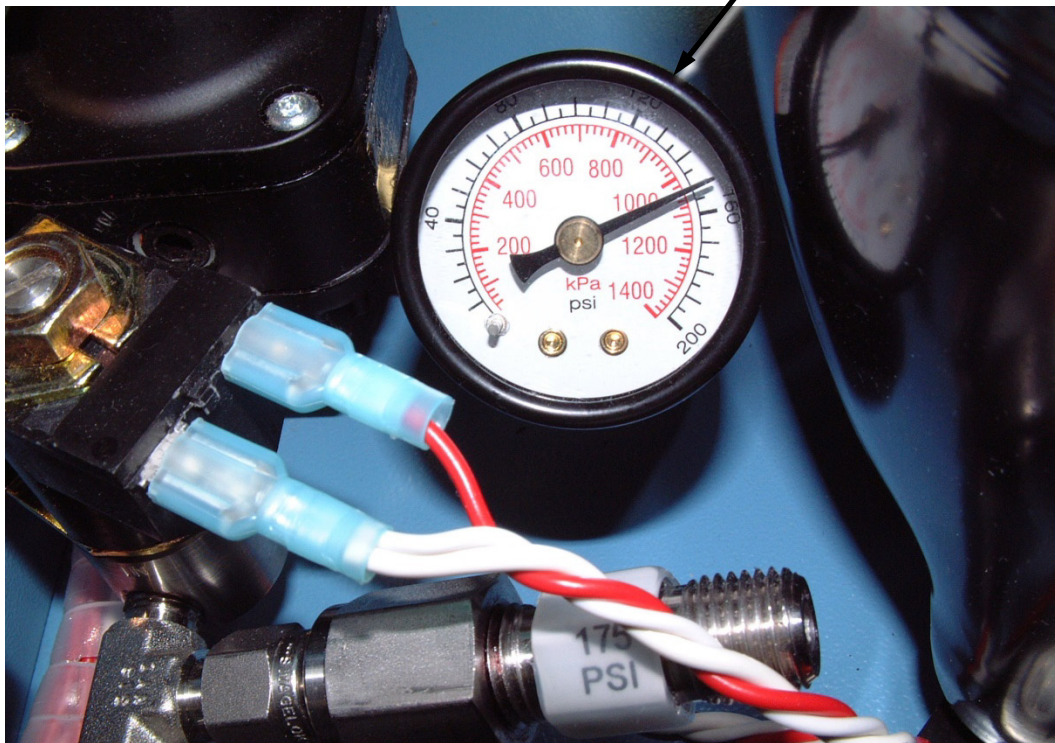
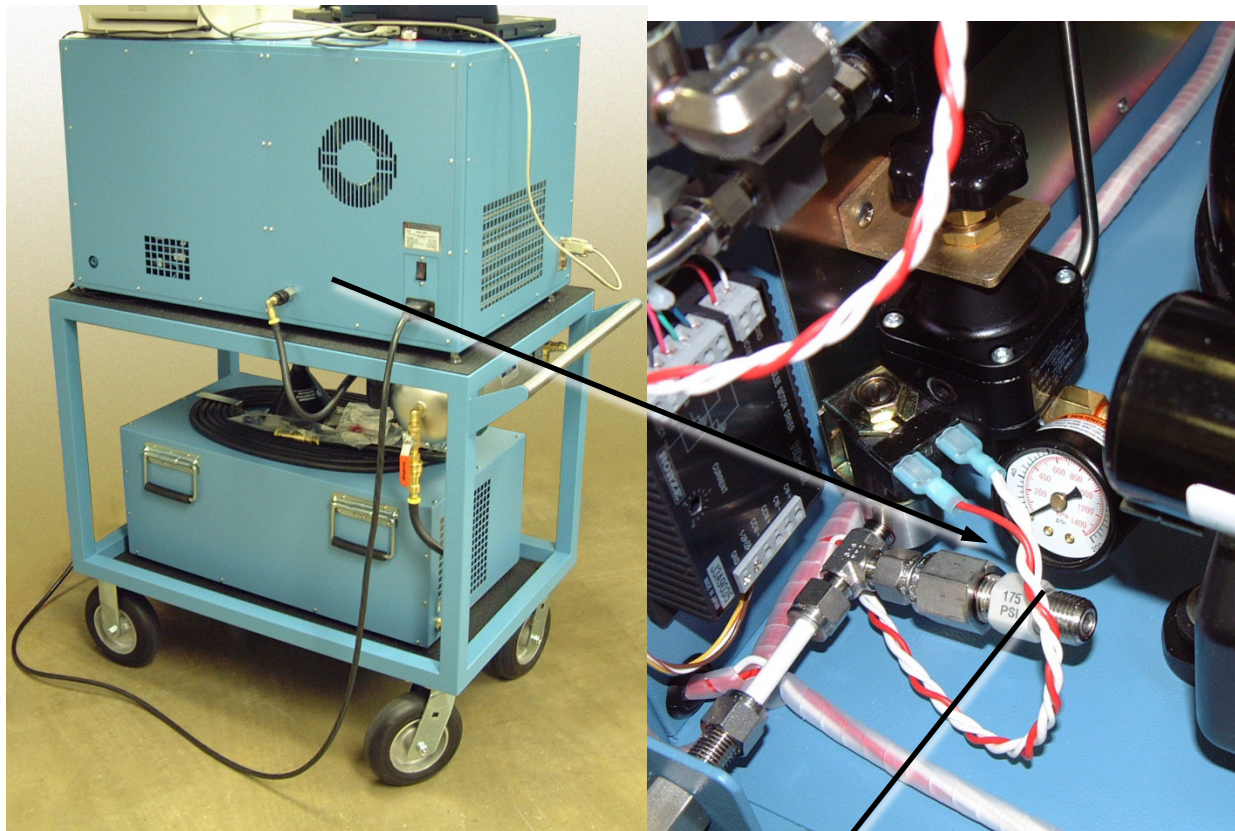
Model 2500 Gauge Locations and Settings

The pressure output gauge for the air compressor system is located on the receiver tank of the cart assembly.



The regulator adjustment is located underneath the cart top shelf and next to the air tank assembly. To adjust, pull down on the knob to unlock for pressure adjustment.





2500 internal pressure gauge/regulator adjustment should be set between 145-150 psi. Note: The 2500 system must be in the run mode.