

Humidity Generation and Calibration Equipment

THUNDER SCIENTIFIC
CORPORATION THE HUMIDITY SOURCE

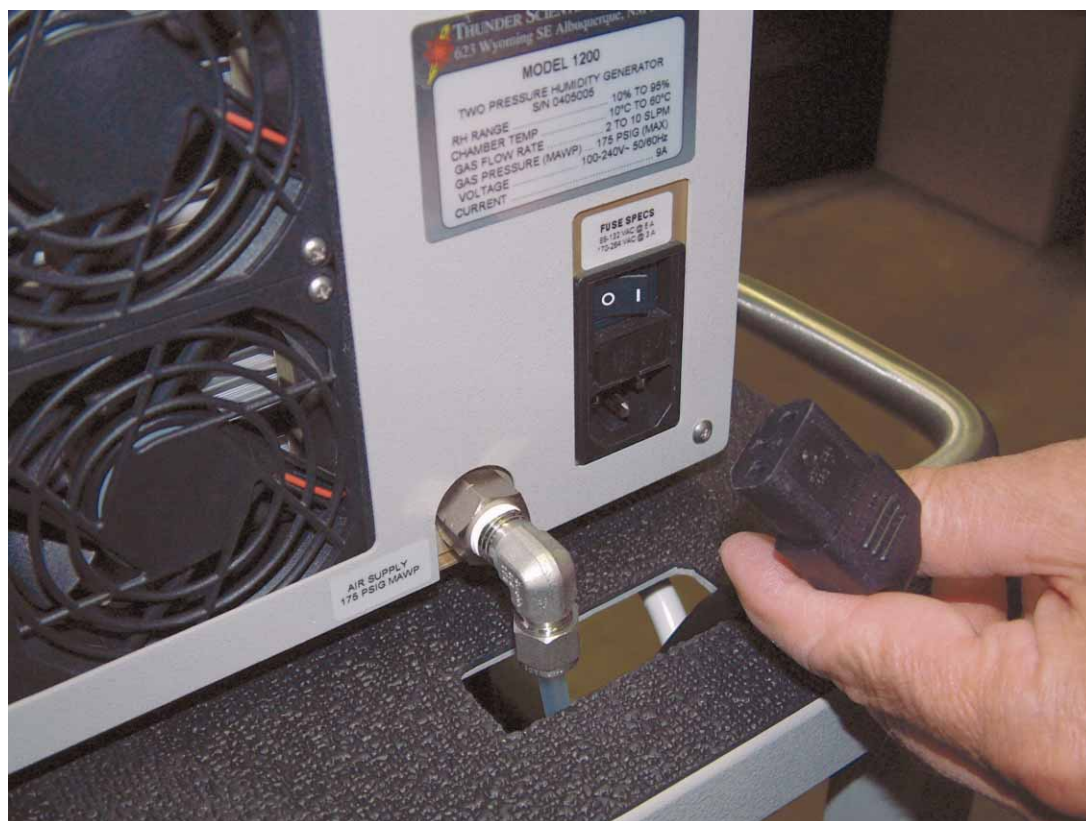
Model 1200

Flow Meter Dry Out Procedure

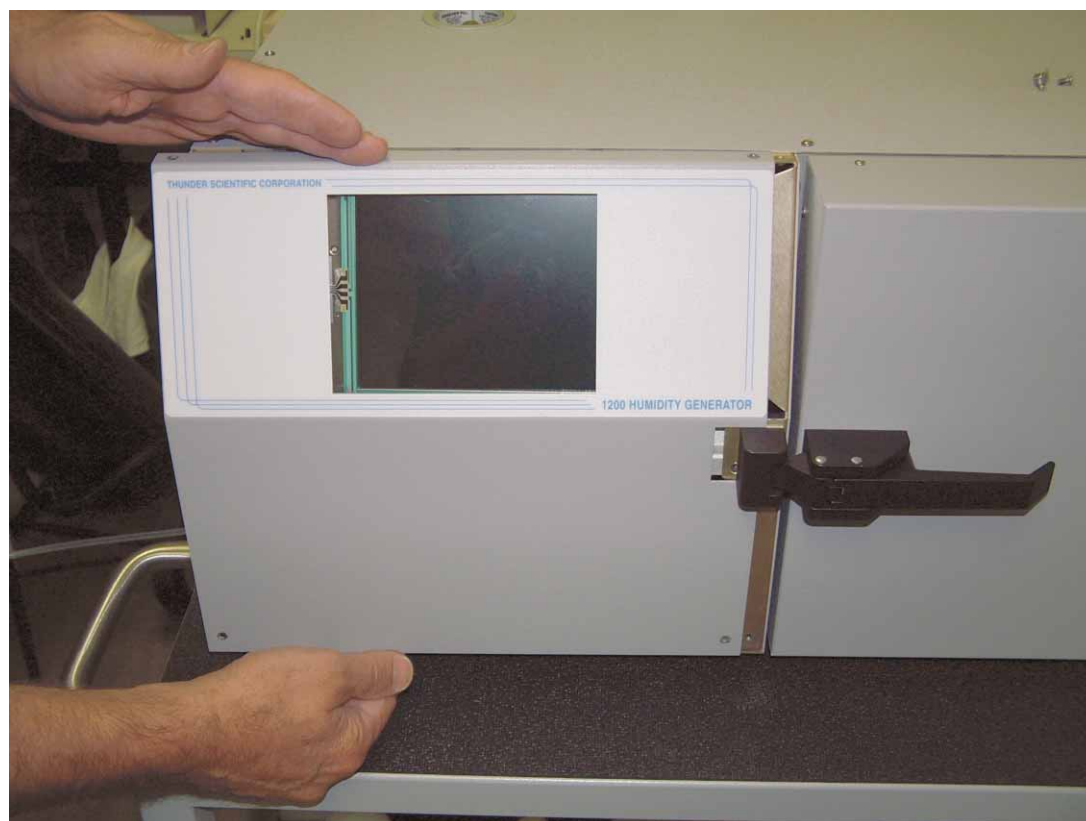


Tech Support Document TSD-0215
Revision Date: September 09, 2005

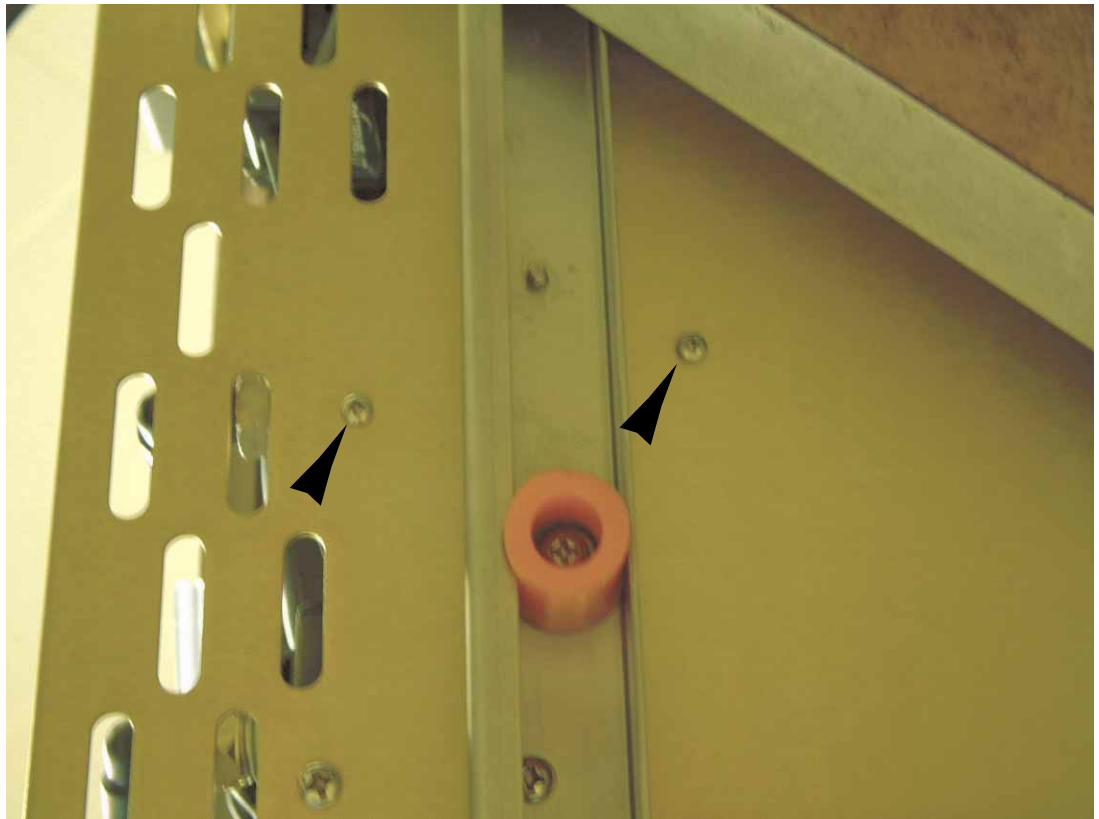




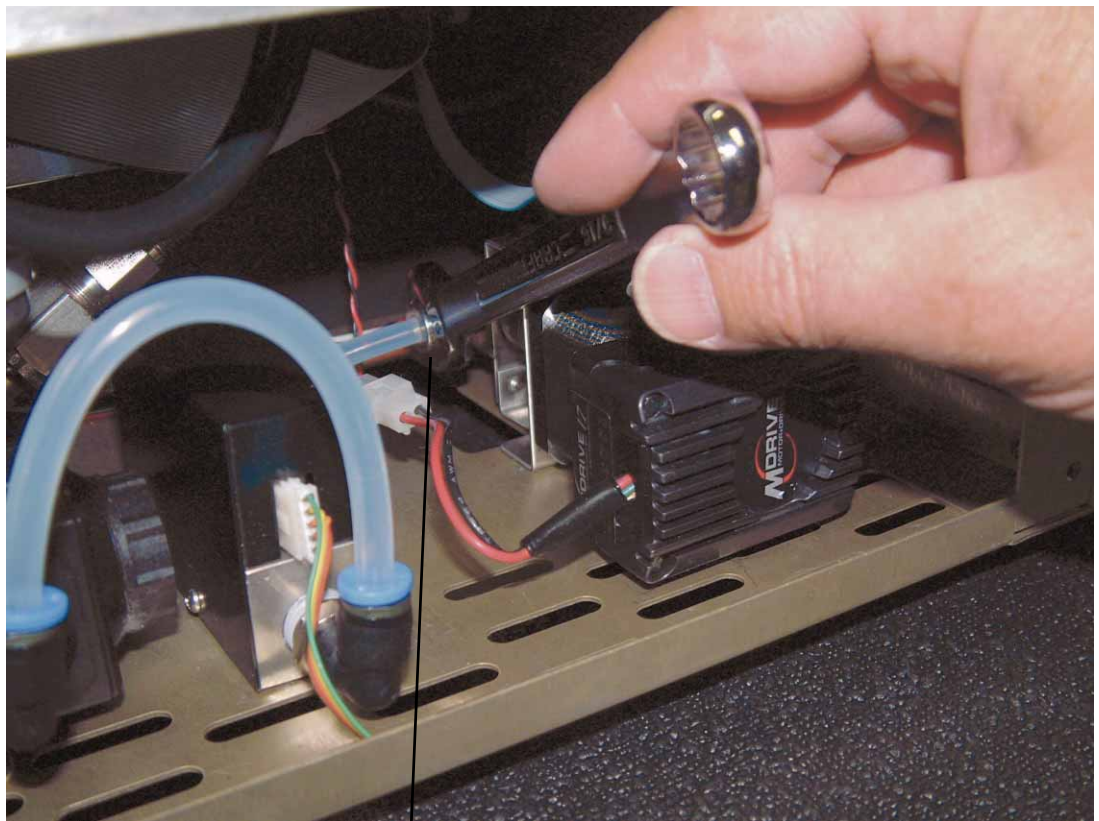
1. Remove power cord and disconnect air in line.



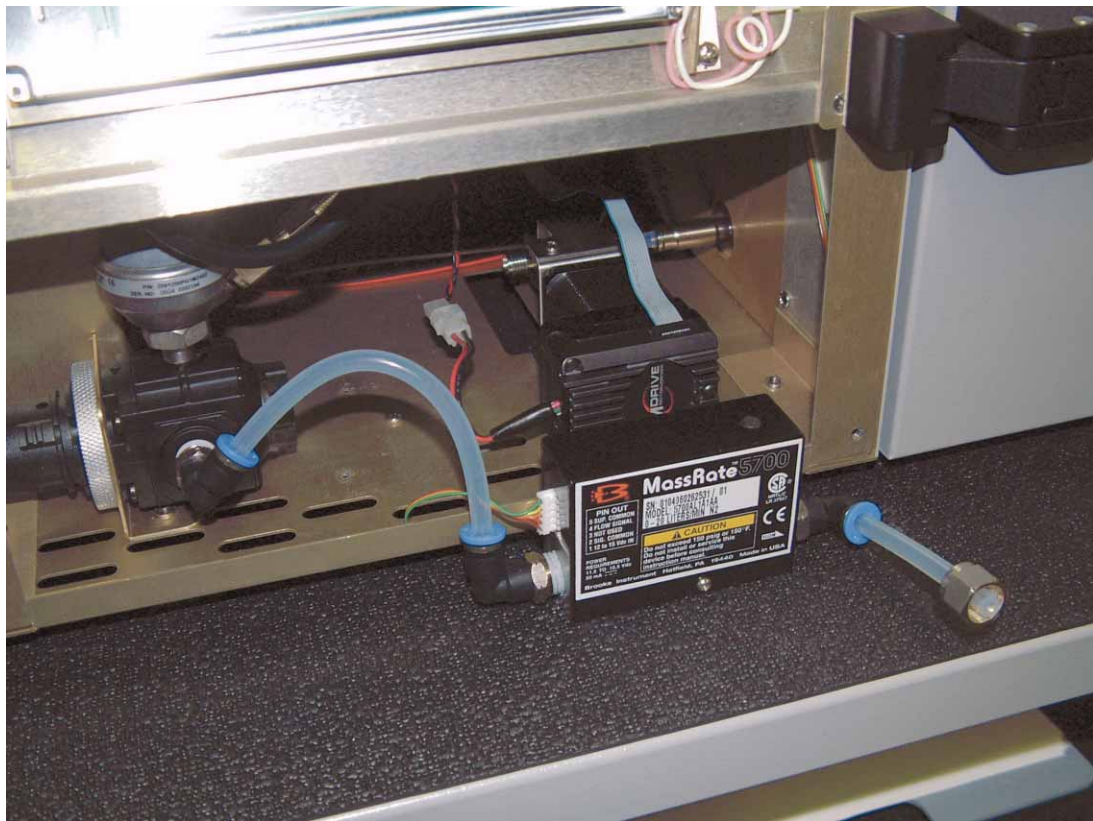
2. Remove the front cover.



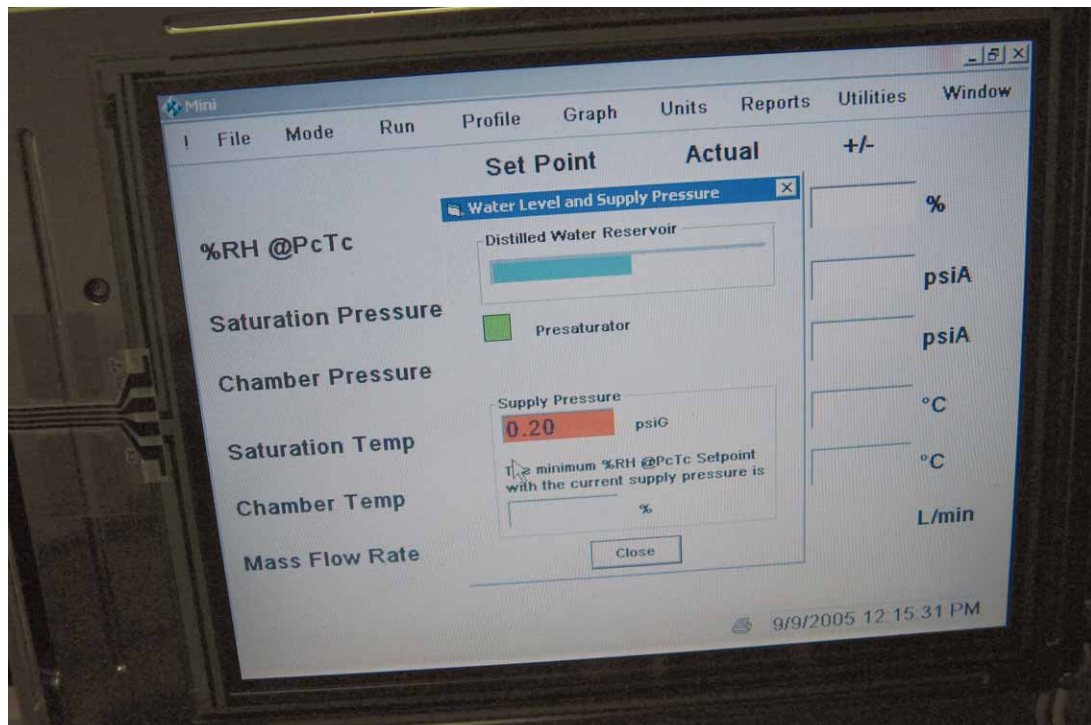
3. Remove flowmeter mounting screws, located on the underside of the unit.

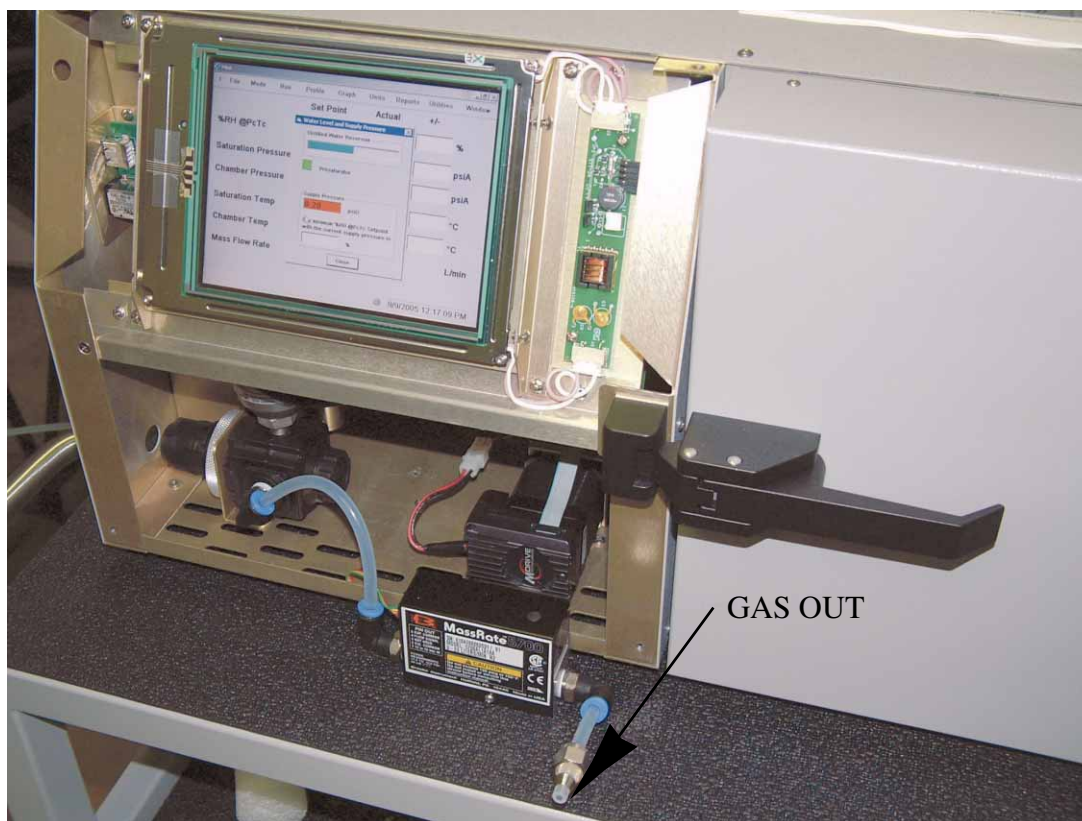


4. Disconnect tubing at the flow control valve inlet.

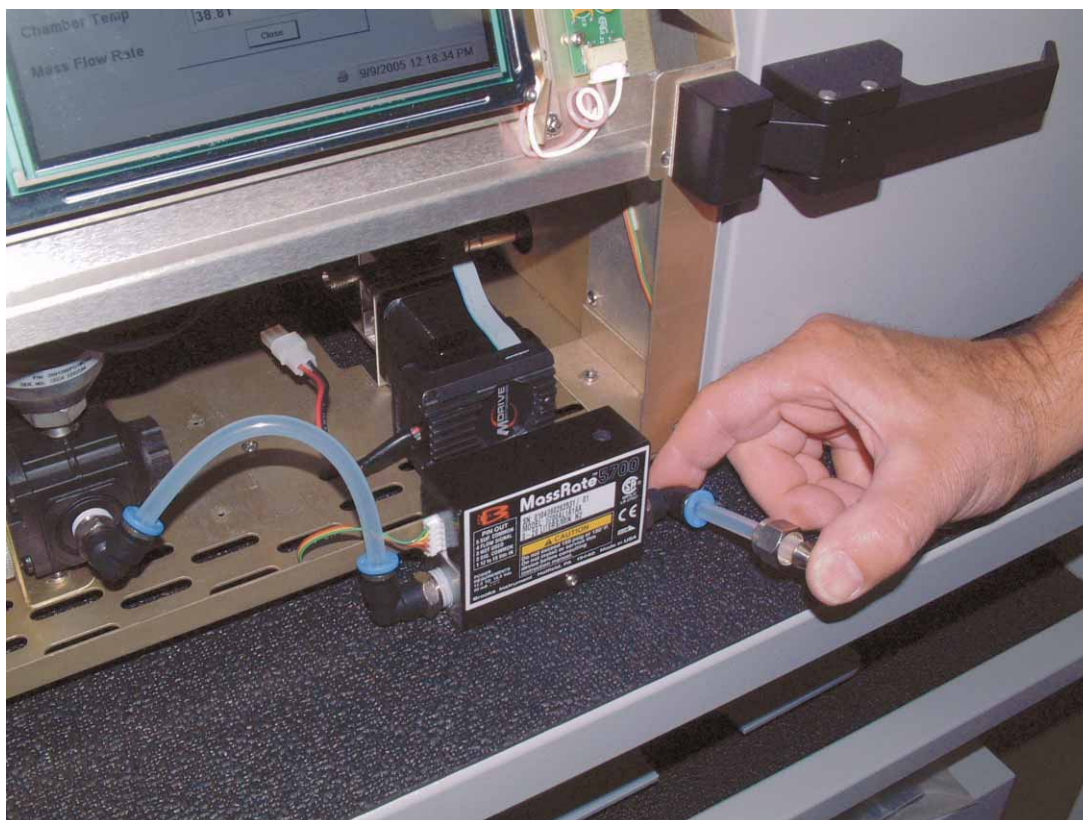


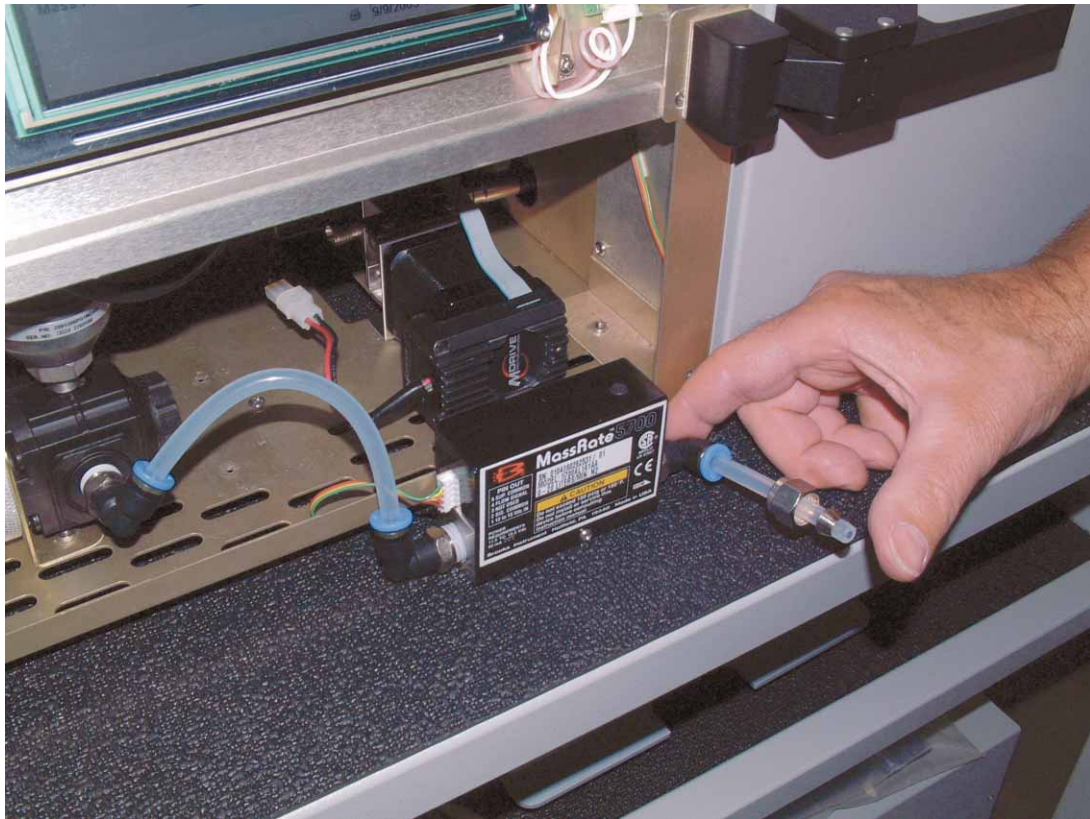
5. Swivel the flowmeter to front as shown.
6. Connect source of dry gas at approx 30 psiG to 1200 air supply inlet.
7. Replace the power cord and apply power to the 1200 generator.
8. The 1200 will boot to the water level and supply pressure window (Caution: Just after the water level and supply pressure window appears the air/gas supply on/off valve will activate).





9. Gas is now flowing through the regulator and flowmeter. Apply thumb over the tubing as shown. Allow the 1200 to pressurize to 30 psiG, then release.





10. Pressurize and depressurize several times until no water is present at the flowmeter outlet or the air in lines.
11. Allow to purge for a minimum of two hours.
12. Close the water level and supply pressure, exit ControLog, and shutdown windows.
13. Switch the power off and disconnect the power cord.
14. Reassemble flow meter in reverse order.
15. If flowmeter error is still observed, a replacement is required.

If you have any questions, please call 1-800-872-7728, or e-mail: support@thunderscientific.com.