

Humidity Generation and Calibration Equipment

THUNDER SCIENTIFIC

CORPORATION THE HUMIDITY SOURCE

Model 2500

Power Supply Voltage Measurement

Tech Support Document TSD-0219

Revision Date: July 9, 2009

623 WYOMING BLVD. SE



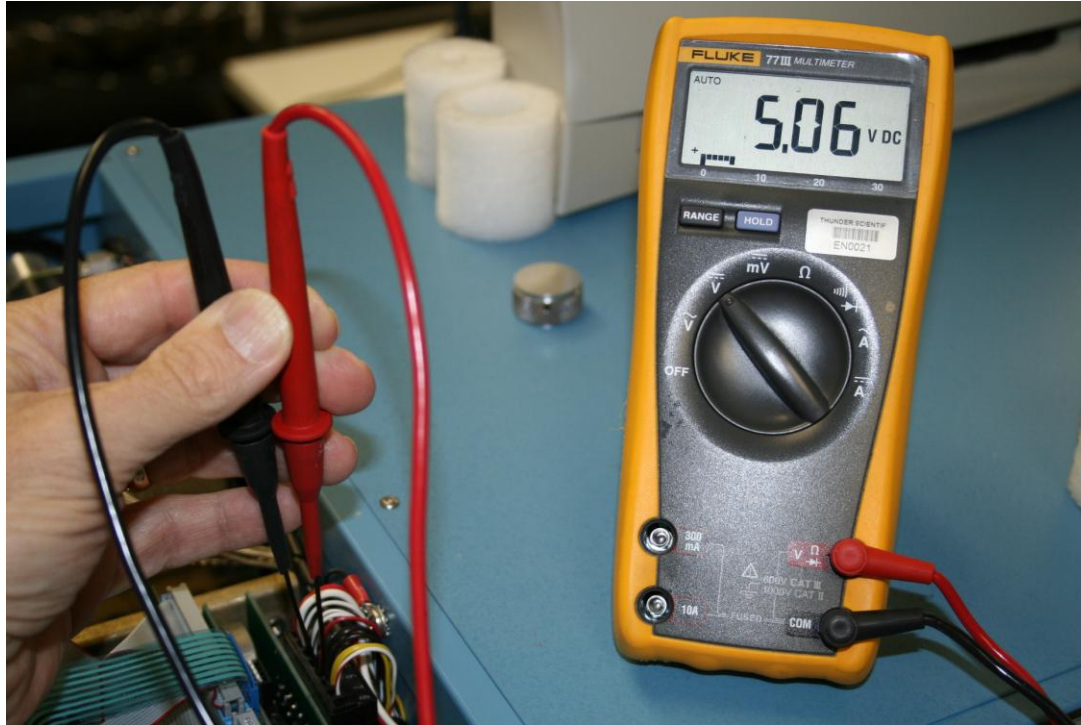
ALBUQUERQUE, NM 87123-3198
WWW.THUNDERSCIENTIFIC.COM



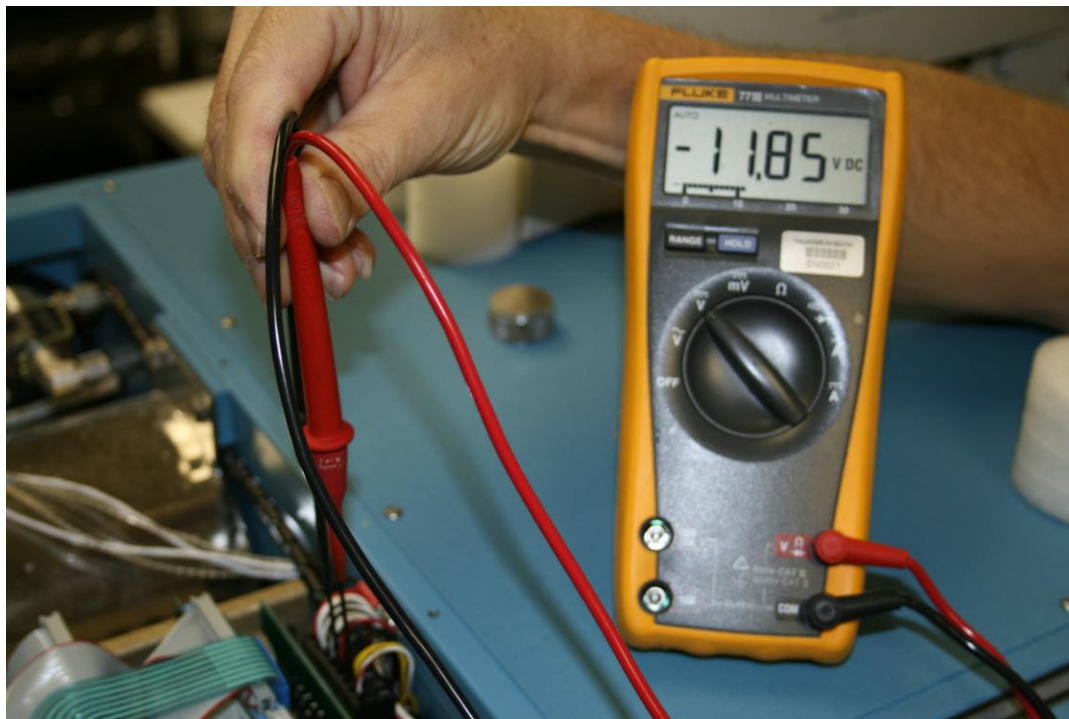
TEL: 505.265.8701
FAX: 505.266.6203

Model 2500 Power Supply Voltage Measurement

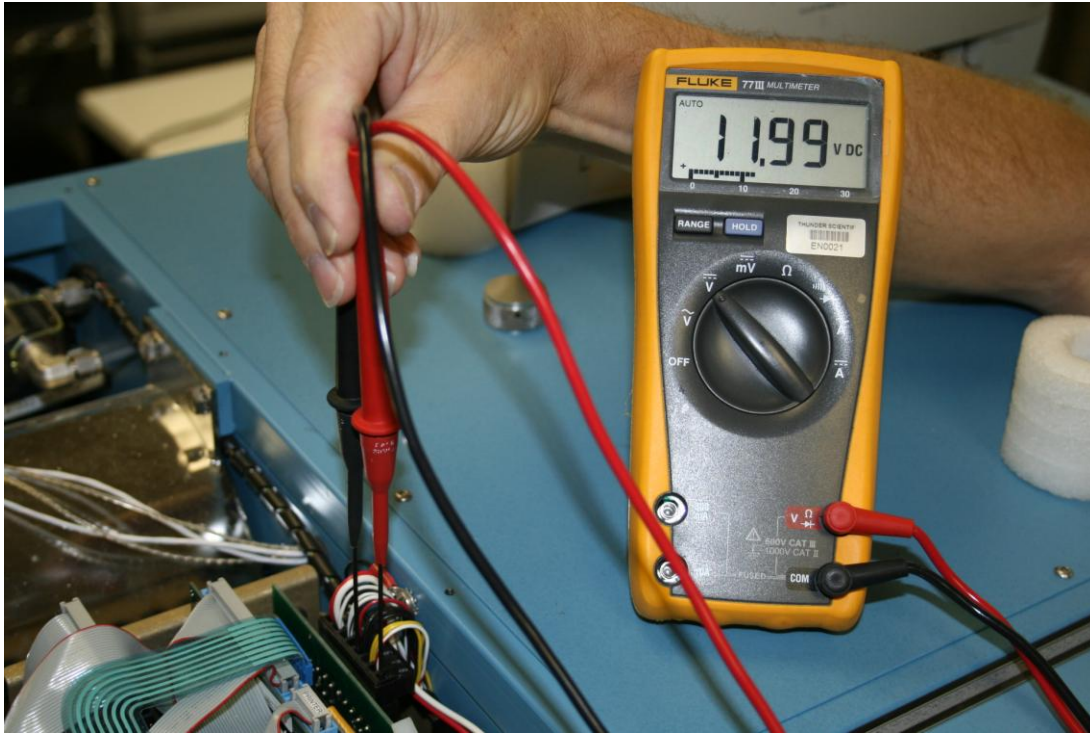
1. Ref. drawing 91S25906 - Schematic AC/DC Power in the 2500 Operations Manual, remove the top left panel cover. Locate J1 connector on the 2500 STD-PS power supply circuit board. Measure the DC voltage at pin J1-5 (COM) to J1-6 (+5.0 VDC).



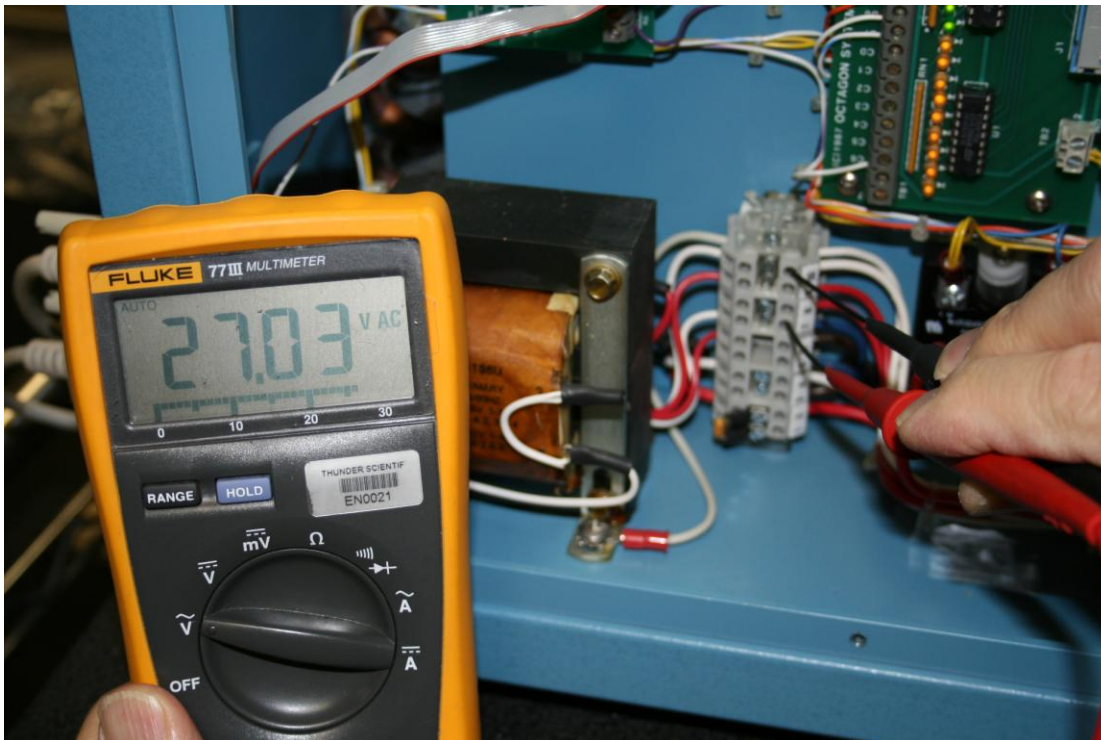
2. Measure the DC voltage at pin J1-5 (COM) to J1-7 (-12.0 VDC).



3. Measure the DC voltage at pin J1-5 (COM) to J1-8 (+12.0 VDC).



4. Remove the small panel below the display, measure the AC voltage at TB1 connector pin 10 (Neutral) to pin 7 (24.0 VAC unregulated), ref. drawing 91A25905 in the 2500 Operations Manual.



5. Measure the DC voltage at pin J1-3 (Return) to J1-4 (24.0 VDC unregulated).



Remove AC power from the 2500, Replace cabinet panels.

Please call 1-800-872-7728 or E-mail: support@thunderscientific for Technical Support.