

Humidity Generation and Calibration Equipment

THUNDER SCIENTIFIC
CORPORATION THE HUMIDITY SOURCE

Model 3900

Methanol Draining Procedure



Tech Support Document TSD-0236
Revision Date: October 09, 2009

623 WYOMING BLVD. SE



ALBUQUERQUE, NM 87123-3198
WWW.THUNDERSCIENTIFIC.COM



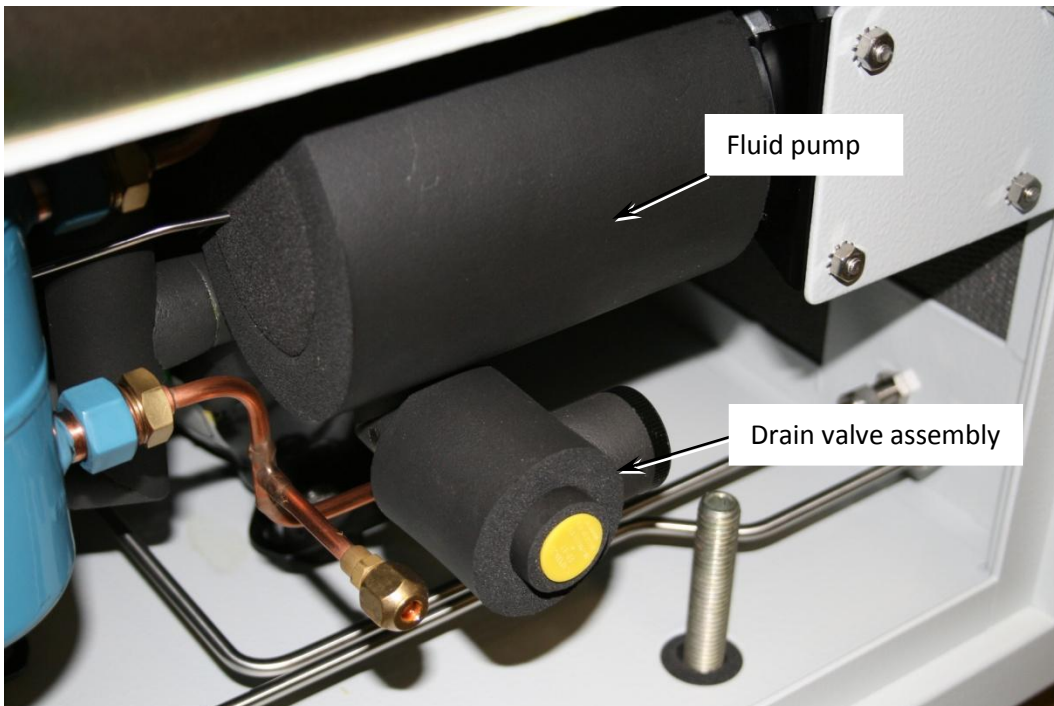
TEL: 505.265.8701
FAX: 505.266.6203

3900 Methanol Draining Procedure

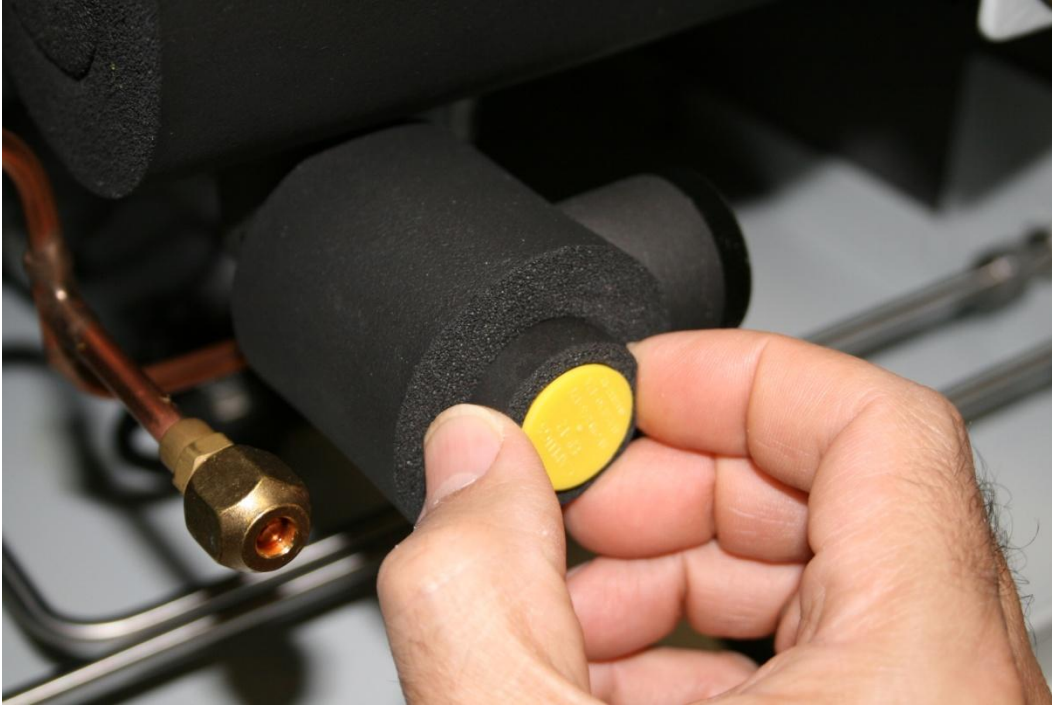
1. Disconnect main power from system.
2. Remove right side console panel.



3. Locate saturator drain valve below the fluid pump.



4. Remove insulation on drain valve outlet.



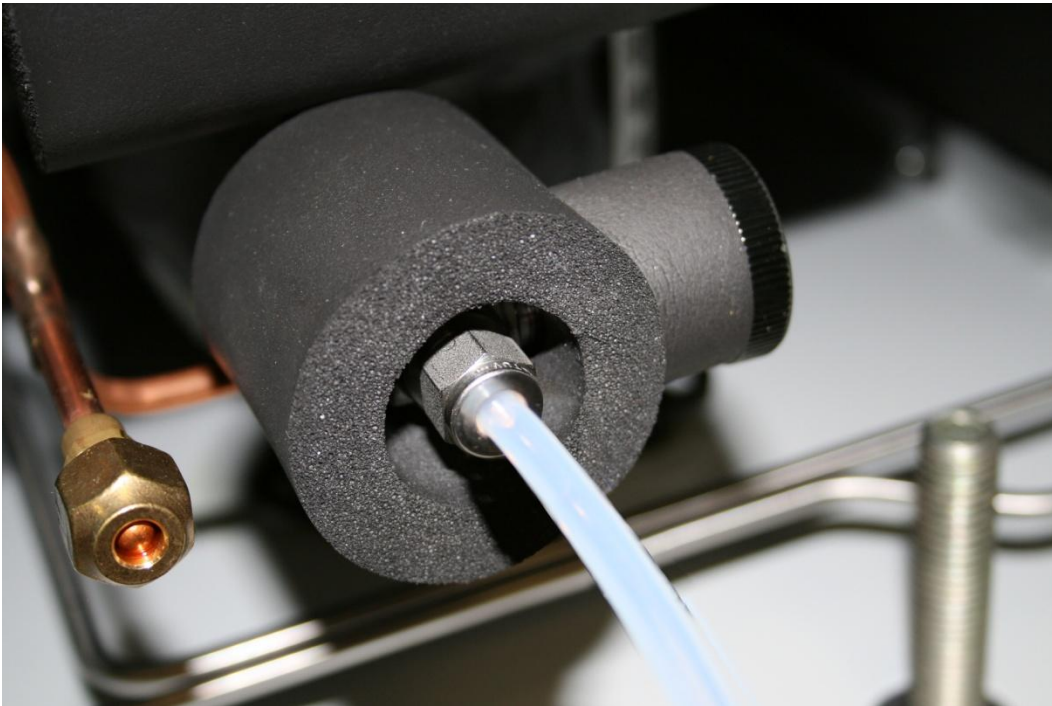
5. Twist and pull gently to remove.



6. Remove the drain valve cap using a 9/16" wrench.



7. Connect a 1/4" hose or tube with nut and ferrules.



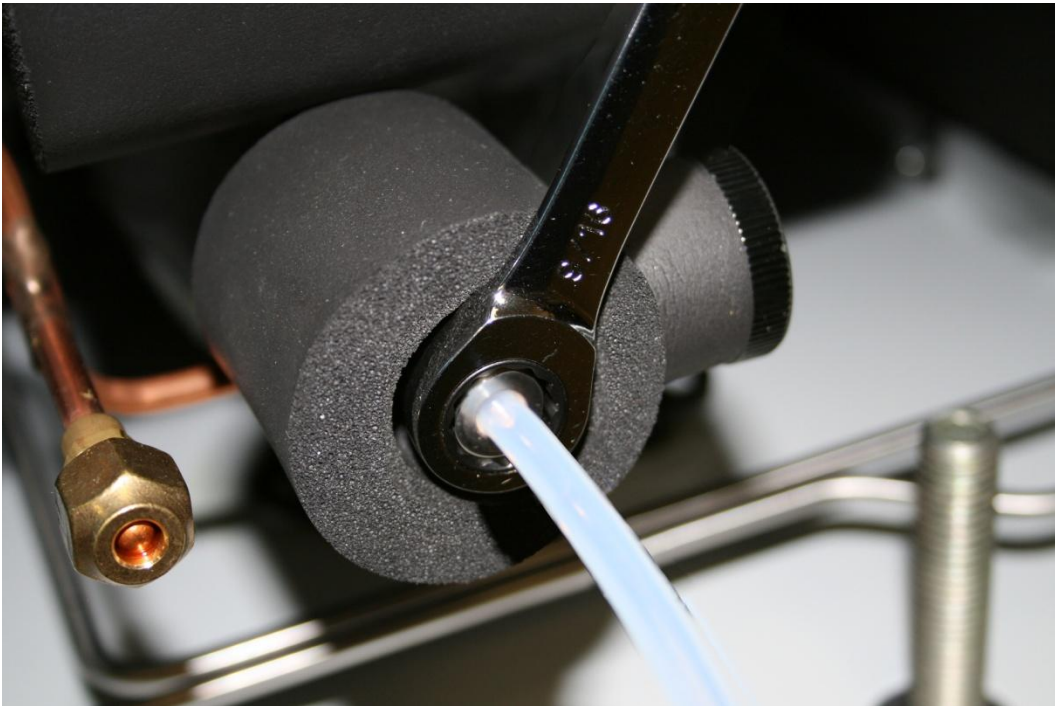
8. Place at the end of the drain hose a two gallon container. Methanol should be drained into a clean container for reuse.
9. As a safety precaution, eye protection and gloves should be worn.



10. Open the drain valve and drain the methanol.



11. After draining methanol, close the drain valve.

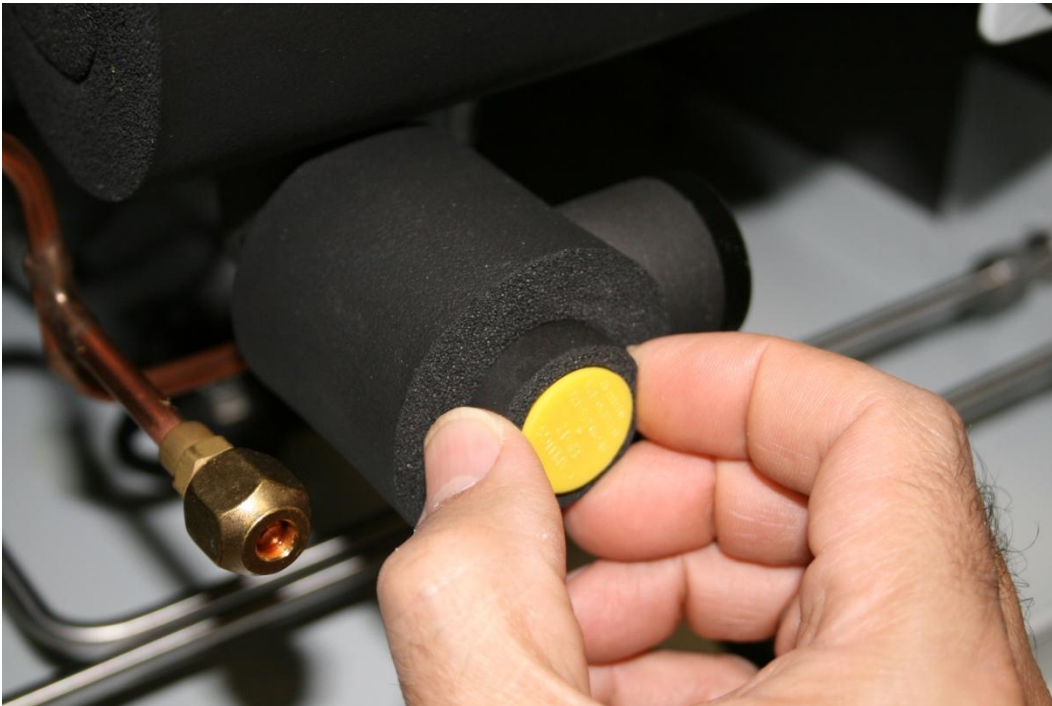


12. Remove the drain hose.

13. Replace the drain cap



14. Insert the insulation cover.



15. Repairs or shipment may be made at this time.

Please Call 1-800-872-7728, Fax 1-505-266-6203, or E-mail support@thunderscientific.com should you have any questions.